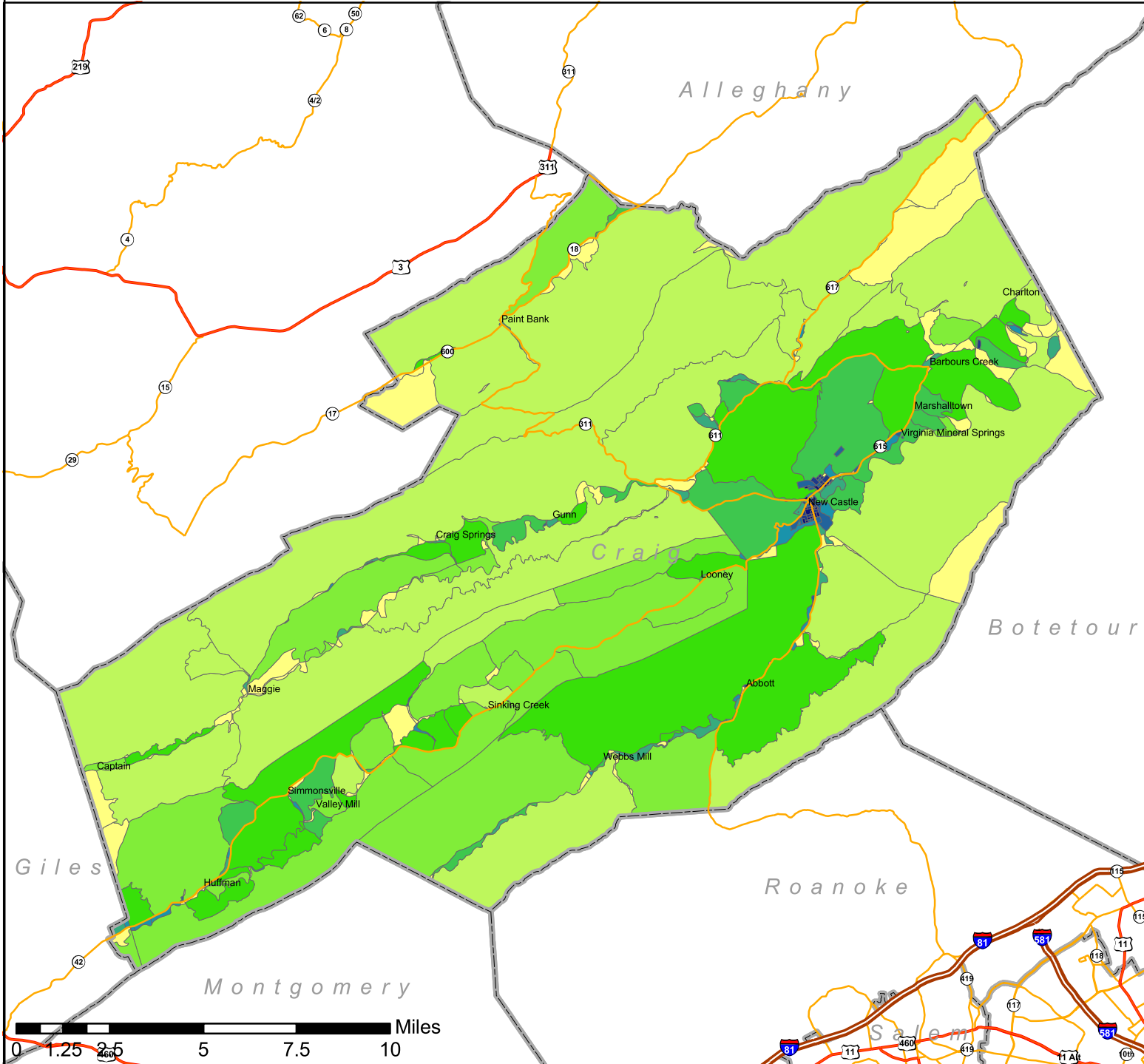


Craig Population Density by 2000 Census Block

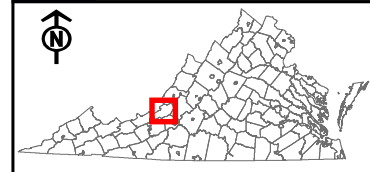


Legend

- County Boundaries
- USGS GNIS Place Names
- Roads**
 - Limited Access Highway
 - US Highway
 - State Highway
- Census Blocks**

Population / Area (sq.mi.)

0
1 - 6
7 - 18
19 - 37
38 - 91
92 - 197
198 - 429
430 - 960
961 - 1864
over 1864



NOTE:

A Census Block's population density was calculated by dividing its total population in 2000 by its area in square miles.

Blocks are classified using the Quantile method, which assigns an equal number of features to each class (in this case, 1/10 of the total).

Quantile classification was based on data samples at the county level. Class breaks are automatically generated for each county, and each county will have a set of class breaks that is unique to its population distribution.

Virginia Tech
1875

eCorridors

Map Creation Date: Aug 6 2004
 Map Author: Seth Peery
 Map Scale: 1:240,761

