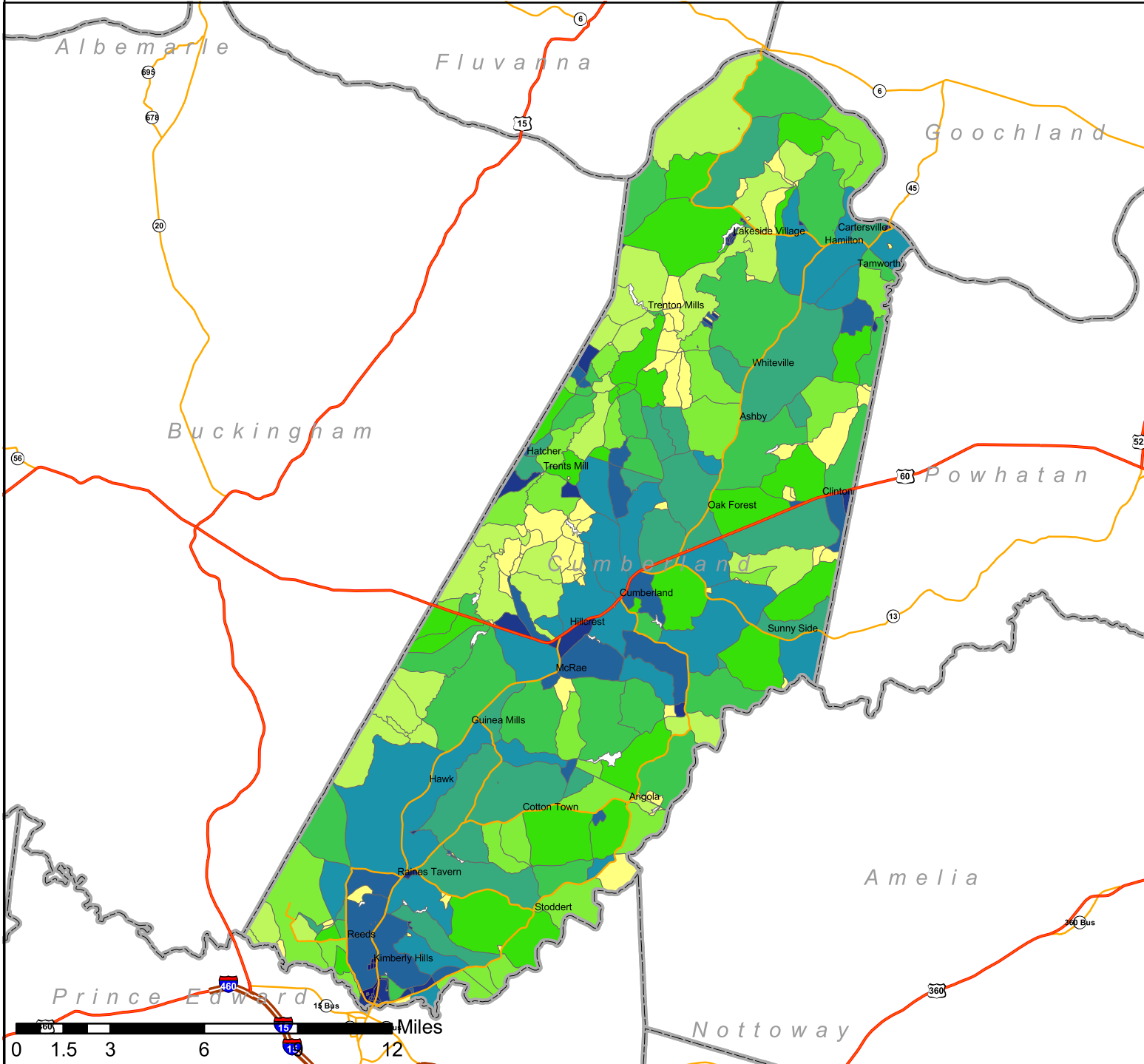


Cumberland Population Density by 2000 Census Block



Legend

- County Boundaries
- USGS GNIS Place Names

Roads

- Limited Access Highway
- US Highway
- State Highway

Census Blocks

Population / Area (sq.mi.)

	0
	1 - 7
	8 - 13
	14 - 20
	21 - 27
	28 - 42
	43 - 56
	57 - 106
	107 - 440
	over 440

N

NOTE:

A Census Block's population density was calculated by dividing its total population in 2000 by its area in square miles.

Blocks are classified using the Quantile method, which assigns an equal number of features to each class (in this case, 1/10 of the total).

Quantile classification was based on data samples at the county level. Class breaks are automatically generated for each county, and each county will have a set of class breaks that is unique to its population distribution.

Virginia Tech
1875
eCorridors

Map Creation Date: Aug 6 2004
Map Author: Seth Peery
Map Scale: 1:287,558

