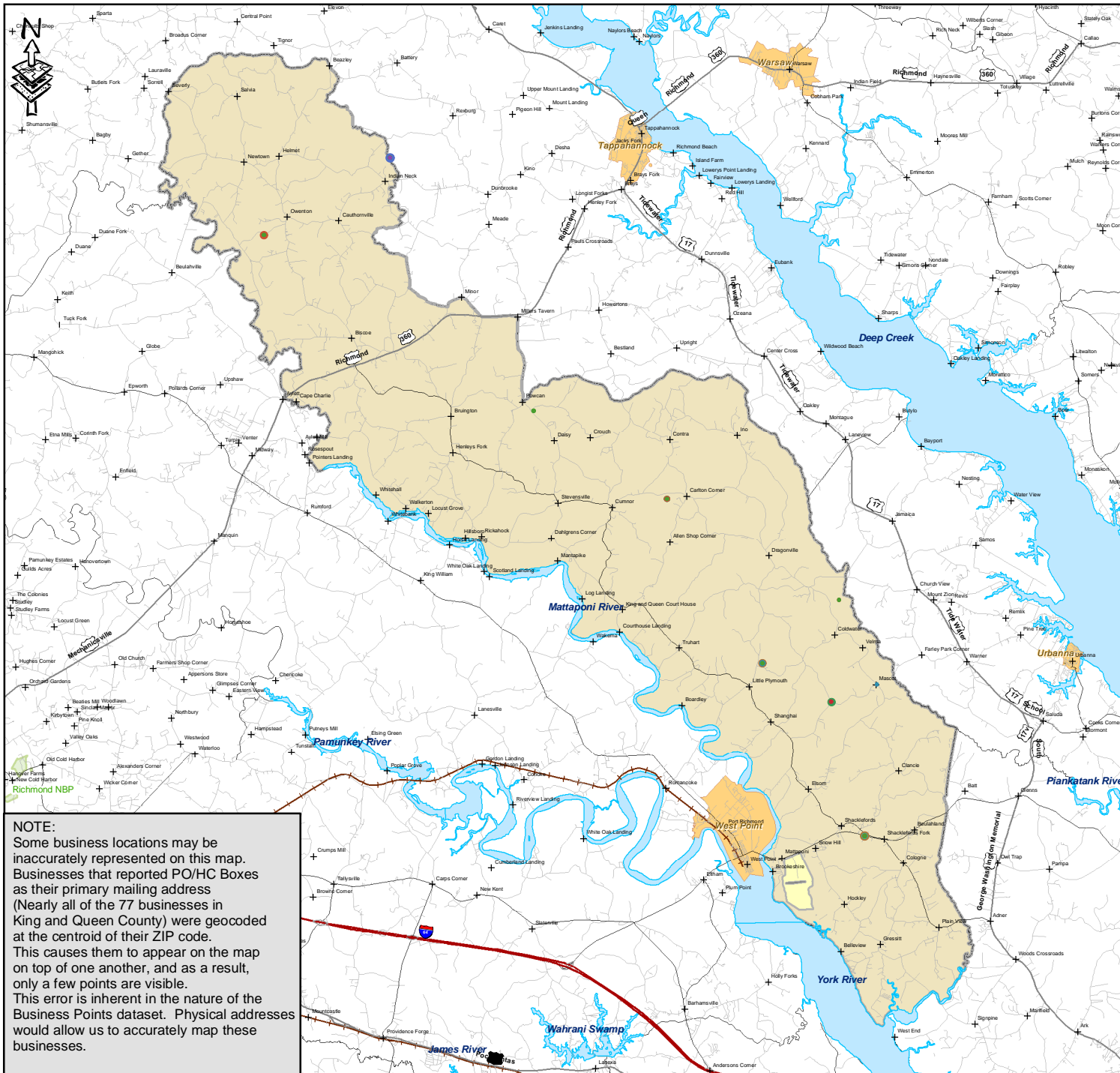


# King and Queen County Businesses



**NOTE:**  
 Some business locations may be inaccurately represented on this map. Businesses that reported PO/HC Boxes as their primary mailing address (Nearly all of the 77 businesses in King and Queen County) were geocoded at the centroid of their ZIP code. This causes them to appear on the map on top of one another, and as a result, only a few points are visible. This error is inherent in the nature of the Business Points dataset. Physical addresses would allow us to accurately map these businesses.

## Legend

### Industry Sectors

Dot color indicates SIC category

- Accounting, Architecture and Engineering
- Agriculture, Forestry and Mining
- Business and Personal Services
- Contractor or Construction
- Education
- Finance, Insurance, Real Estate
- Government
- Health
- Household and Miscellaneous Services
- Legal
- Manufacturing
- Membership Organizations
- Non-Classified Establishments
- Retail
- Transportation, Communication and Public Utilities
- Wholesale

### Firm Size

Dot size indicates number of employees

- 1-5
- 6-10
- 11-20
- 21-50
- >50

### Highways

- Limited Access Freeway
- Highway
- Secondary Roads
- Local Separated
- Local Unseparated
- Ramps
- Unknown cfcc
- Railroads

+ Populated Places (GNIS)

- Towns and Cities
- Parks
- King and Queen County
- Other Virginia Counties
- Surrounding States

Scale: 1:337,892

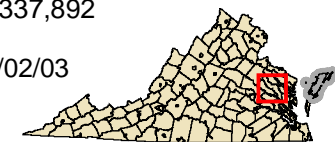
Date: 3/02/03

Author:

Seth Peery  
 Virginia Tech eCorridors Group  
 sspeery@vt.edu

Data Source:

MapInfo/GeoResults Business Points  
 Data Version: December 2003



0 3.75 7.5 15 22.5 30 Miles