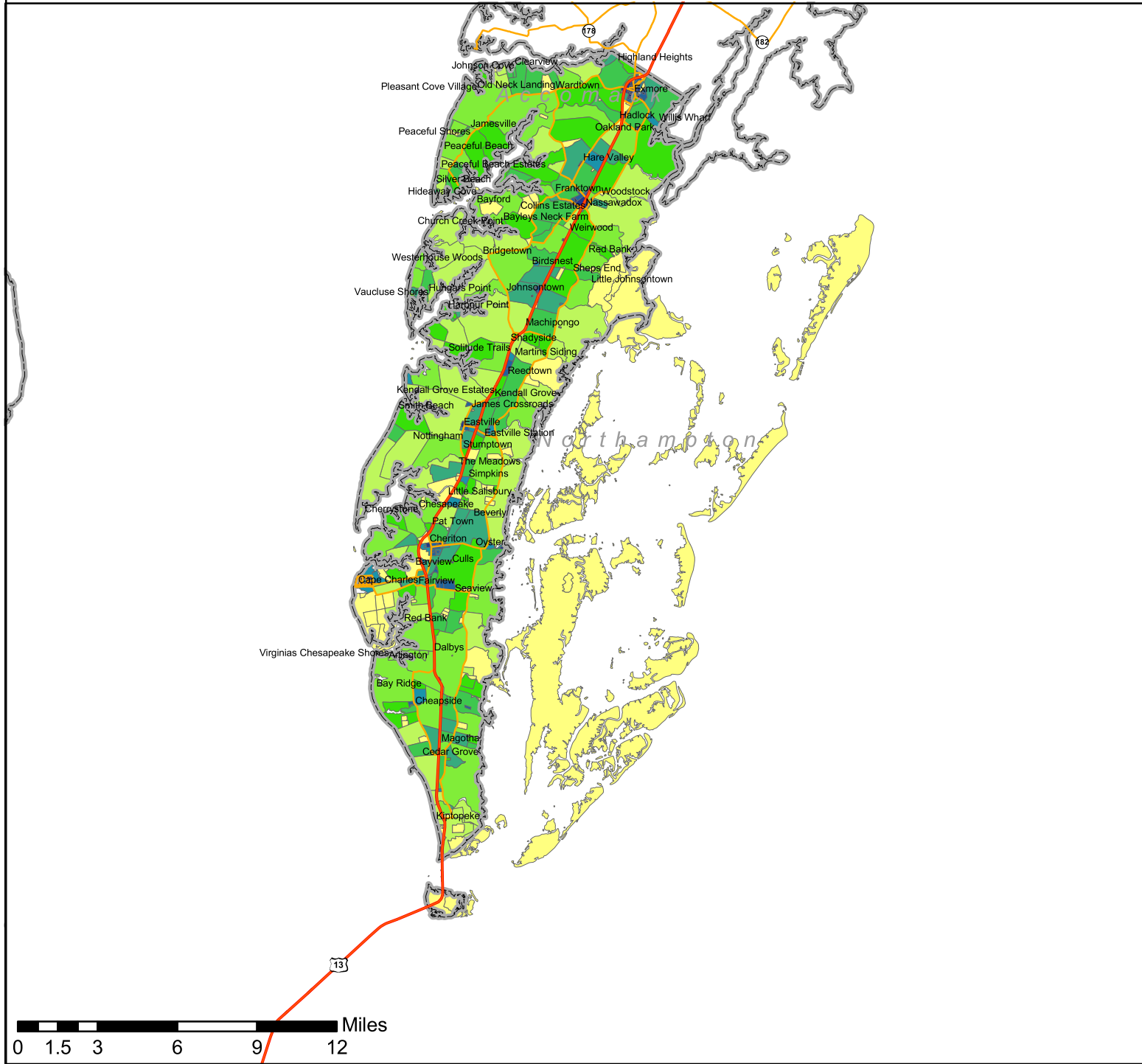


Northampton Population Density by 2000 Census Block

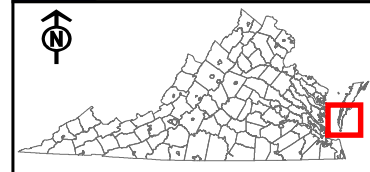


Legend

- County Boundaries
- USGS GNIS Place Names
- Roads**
 - Limited Access Highway
 - US Highway
 - State Highway
- Census Blocks**

Population / Area (sq.mi.)

| | |
|--|-------------|
| | 0 |
| | 1 - 19 |
| | 20 - 46 |
| | 47 - 86 |
| | 87 - 144 |
| | 145 - 327 |
| | 328 - 824 |
| | 825 - 1568 |
| | 1569 - 3148 |
| | over 3148 |



NOTE:

A Census Block's population density was calculated by dividing its total population in 2000 by its area in square miles.

Blocks are classified using the Quantile method, which assigns an equal number of features to each class (in this case, 1/10 of the total).

Quantile classification was based on data samples at the county level. Class breaks are automatically generated for each county, and each county will have a set of class breaks that is unique to its population distribution.

Virginia Tech

eCorridors

Map Creation Date: Aug 6 2004
 Map Author: Seth Peery
 Map Scale: 1:337,555